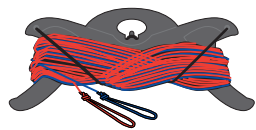


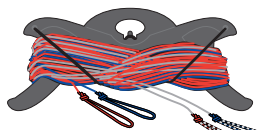
FLYING LINE INSTRUCTIONS

THE LINE PACKAGE



2 Line Set

OR



4 Line Set

LINE SAFETY

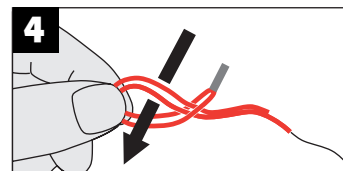
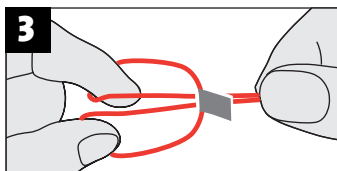
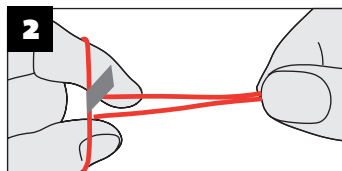
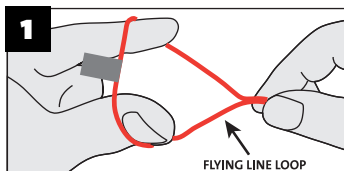
⚠ Flexifoil strongly recommend that you abide by ALL safety guidelines and conduct yourself in a safe manner at all times

- ALWAYS check your equipment for wear and tear before flying. DO NOT fly with worn or damaged equipment. Repair or replace accordingly.
- Flying lines and bridles under tension can cut like a knife. Always keep your lines away from people and animals. NEVER attempt to catch or hold a kite by the lines or bridle.
- ALWAYS use the Flexifoil recommended line strength for your chosen activity. See www.flexifoil.com for details.

⚠ Remember, YOU are responsible for the safe operation of your kite and equipment at all times

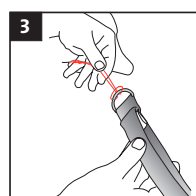
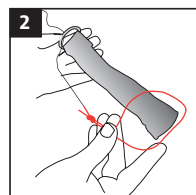
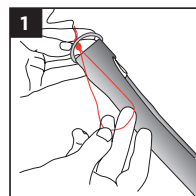
THE LARKS-HEAD KNOT

All line to kite connections are made using the larks-head knot. The diagrams below show you how to make one in the loops at the ends of your flying lines. Connect the lines to your control gear before attaching the lines to your kite.

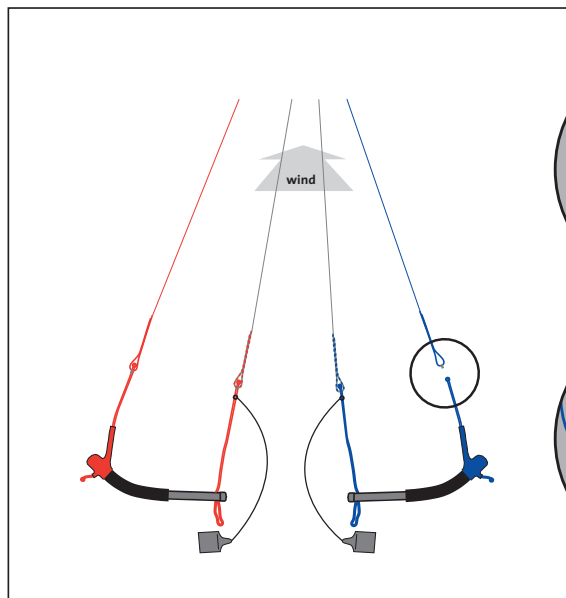


Larks-head knots can pull very tight during use. However, by pulling on the tag, they will come undone easily.

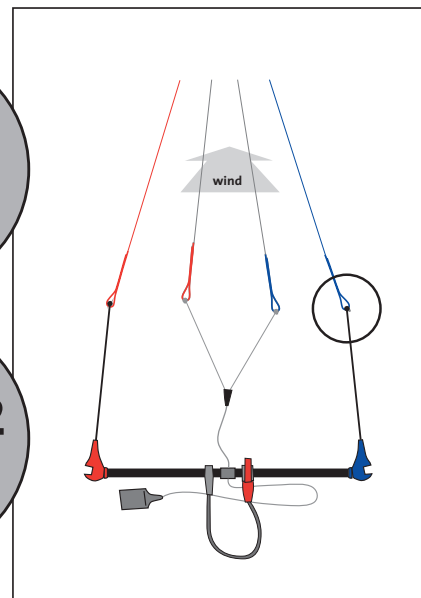
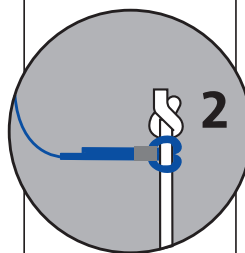
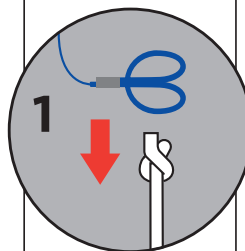
CONNECTING THE LINES TO THE CONTROL GEAR



Wrist Straps



4 line Handles



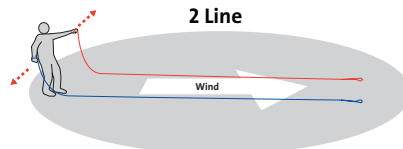
4 line Control Bar

ESSENTIAL INFORMATION

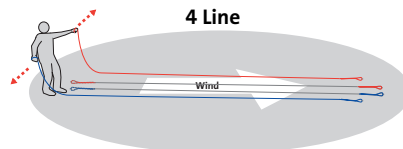
⚠ Make sure you have the right lines

- Before using this line set ensure that it is of the correct type, length and strength for your kite. Please refer to your kite instruction manual or contact the manufacturer for advice.
- DO NOT fly your kite without reading and understanding the instruction manual. If you are unsure about any aspect, please consult your dealer or the kite manufacturer.

UNWINDING YOUR LINES



2 Line

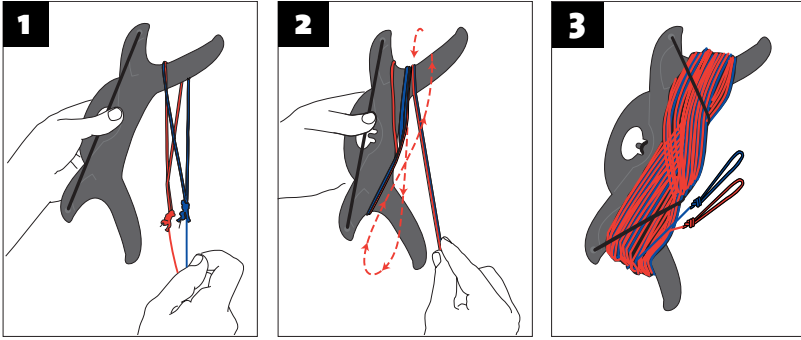


4 Line

Unwind all of your lines and separate them on the ground. Ensure there are no tangles before connecting.

PACKING AWAY THE LINES

2 line kites

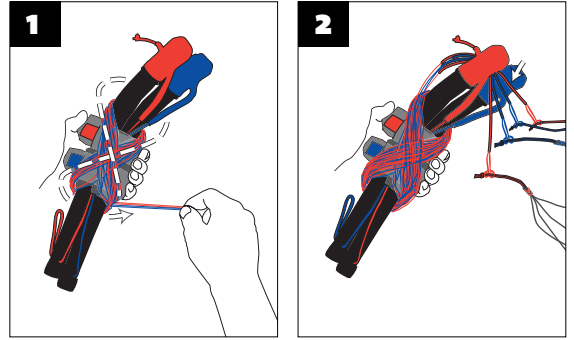


2 line kites: We recommend that you disconnect your lines from your kite and straps. Store your lines on the line winder by winding in a **figure-of-eight** motion.

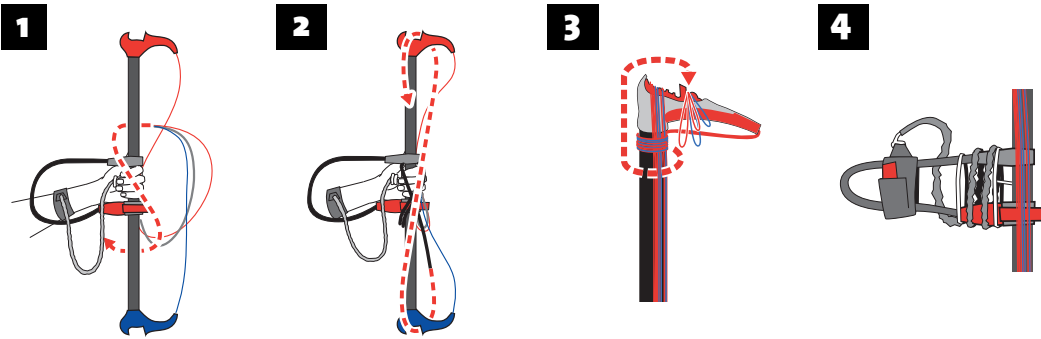
4 line kites with Flexifoil Handles: We recommend that you leave your lines connected to the handles and the kite. Secure the safety straps round the handles. Holding the handles by the safety straps, wind the lines in a **figure-of-eight** motion. Just before you reach the kite attachment points, secure the lines between the tops of the handles. Fold up the kite and place the handles (still connected) on top. Next roll up your kite with the handles inside.

! IMPORTANT: To avoid twists in the lines, it is vital that the next time you use your kite, you unwind the lines in the same way as you wound them on; i.e. the unwinding action must be the exact reverse of the winding action.

4 line kites with Flexifoil Handles



4 line kites with Flexifoil Control Bar



4 line kites with Flexifoil Control Bar: We recommend that you leave your lines connected to the control bar. Place the safety strap on your wrist to keep it clear. Holding the bar at the centre, wind the leader lines around the bar in a **figure-of-eight** motion. Continue winding the flying lines using the line guides on the bar end mouldings. Just before you reach the kite attachment points, wind the lines a few turns around one end of the bar and tuck into the securing slot. Wind the safety line around the harness stop (if fitted) and secure the wrist strap around the stop.

! IMPORTANT: To avoid twists in the lines, it is vital that the next time you use your kite, you unwind the lines in the same way as you wound them on; i.e. the unwinding action must be the exact reverse of the winding action.

LINE ADJUSTMENT

Flexifoil Flying Lines are extreme pre-stretched which means that there is usually no need to adjust your lines after flying. You may still need to tune your kite to best match the wind conditions. Refer to your kite instructions or visit www.flexifoil.com/tips for more information.

LINE CARE AND MAINTENANCE

! Taking good care of your kite and lines will prolong their life

- Always check your lines for wear and tear
- Ensure there are no unnecessary knots in the lines as these will weaken them
- Avoid damaging your lines on sharp or abrasive surfaces such as stones or rocks as this may cause the lines to break in the future
- Store your lines properly after use by winding them onto a winder, control bar or handles
- It is advisable to rinse your lines periodically in fresh water to remove any salt and sand. Ensure lines are dry before winding and storing them
- If the sleeved loops become worn after many hours of flying, simply replace them using a sleeving kit.

Important note on flying lines

We pride ourselves on our outstanding quality control and we will replace any of our products that fail as a result of defective workmanship or faulty materials. This is in addition to your statutory rights.

Flexifoil will not replace flying lines that have been improperly used, have become worn through normal use or have failed as a result of knots in the line. If kites are flown on flying lines of insufficient breaking strain, the lines will break. Always follow Flexifoil recommendations to ensure that flying lines of an appropriate breaking strain are used when flying one or more kites.

